

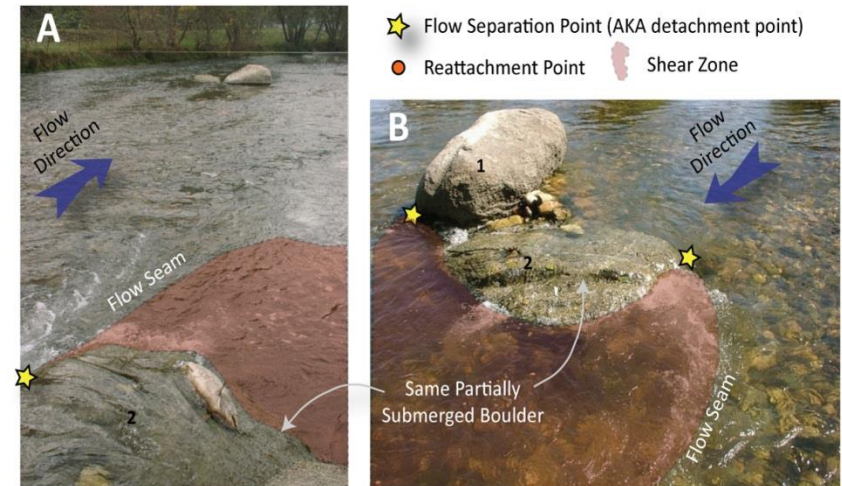
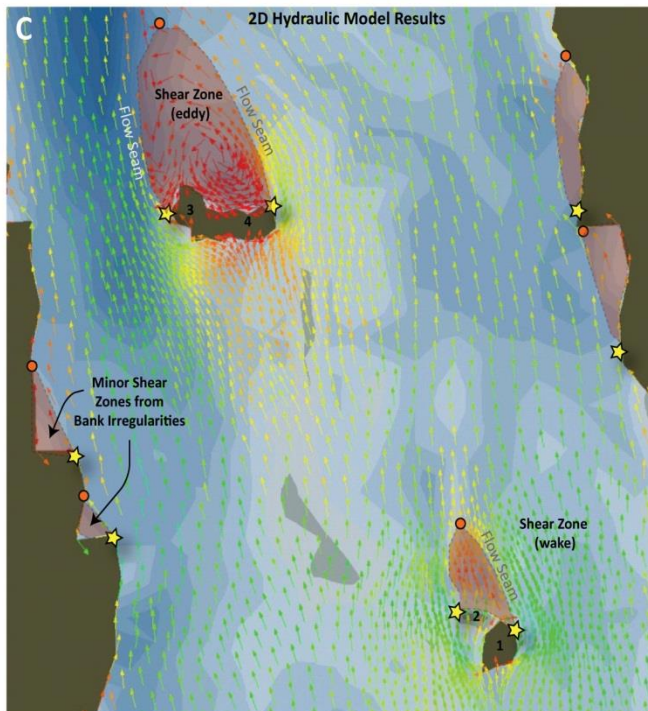
# Development Progress Update

## Shear Zones

Inputs: Delft3D output from ~60 velocity validation/bug sites

*Shear Zone* - Areas of slower velocity water in close proximity to areas of higher velocity water in rivers and streams provide important energy refugia and drift feeding zones for fish

↑  
Flow

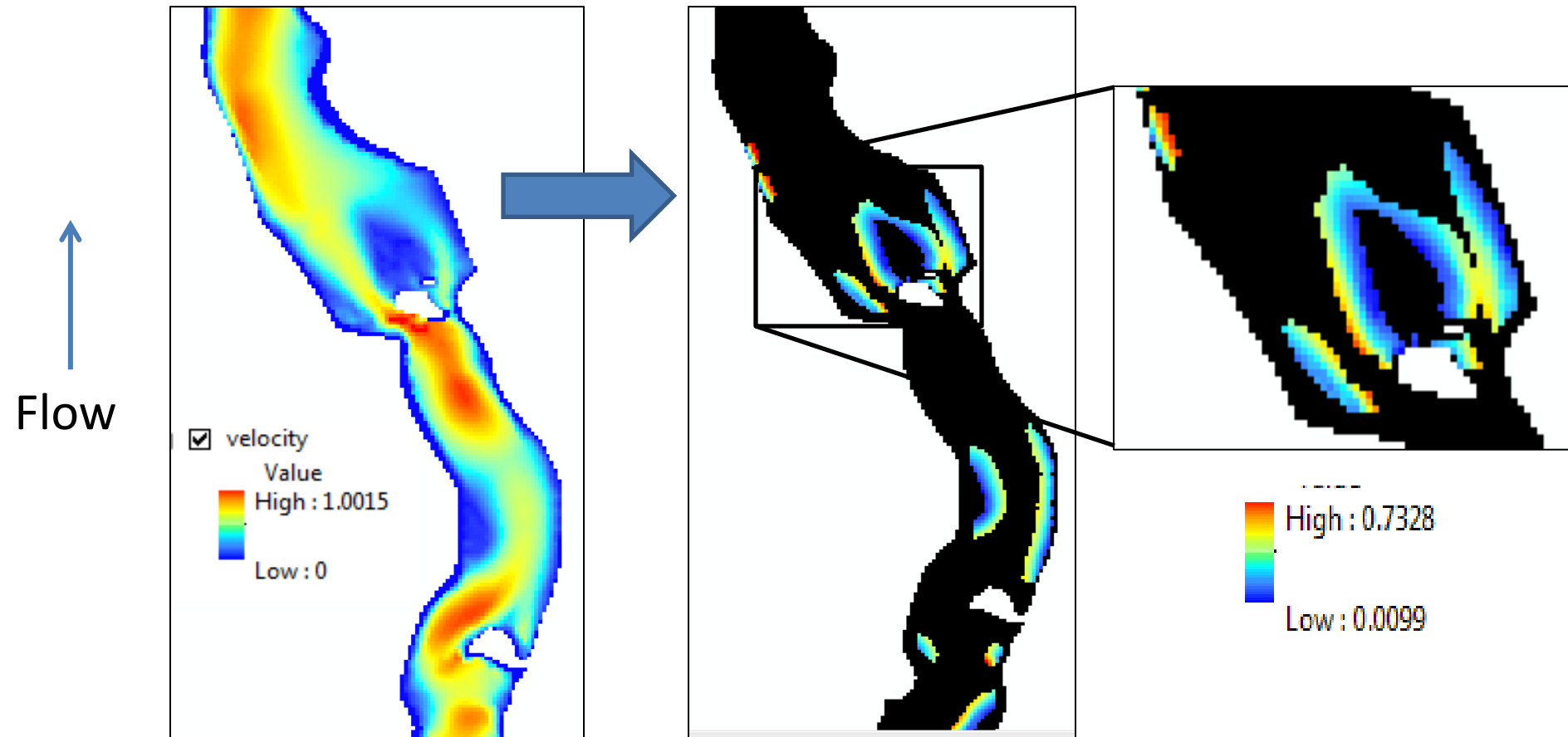


# Development Progress Update

## Shear Zones

Inputs: Delft3D output from ~60 velocity validation/bug sites

Currently: Raster analyses used to identify flow seams



# Development Progress Update

## Shear Zones

Inputs: Delft3D output from ~60 velocity validation/bug sites

Next Step: Vector analysis to identify flow separation points, flow seams, and shear zones

