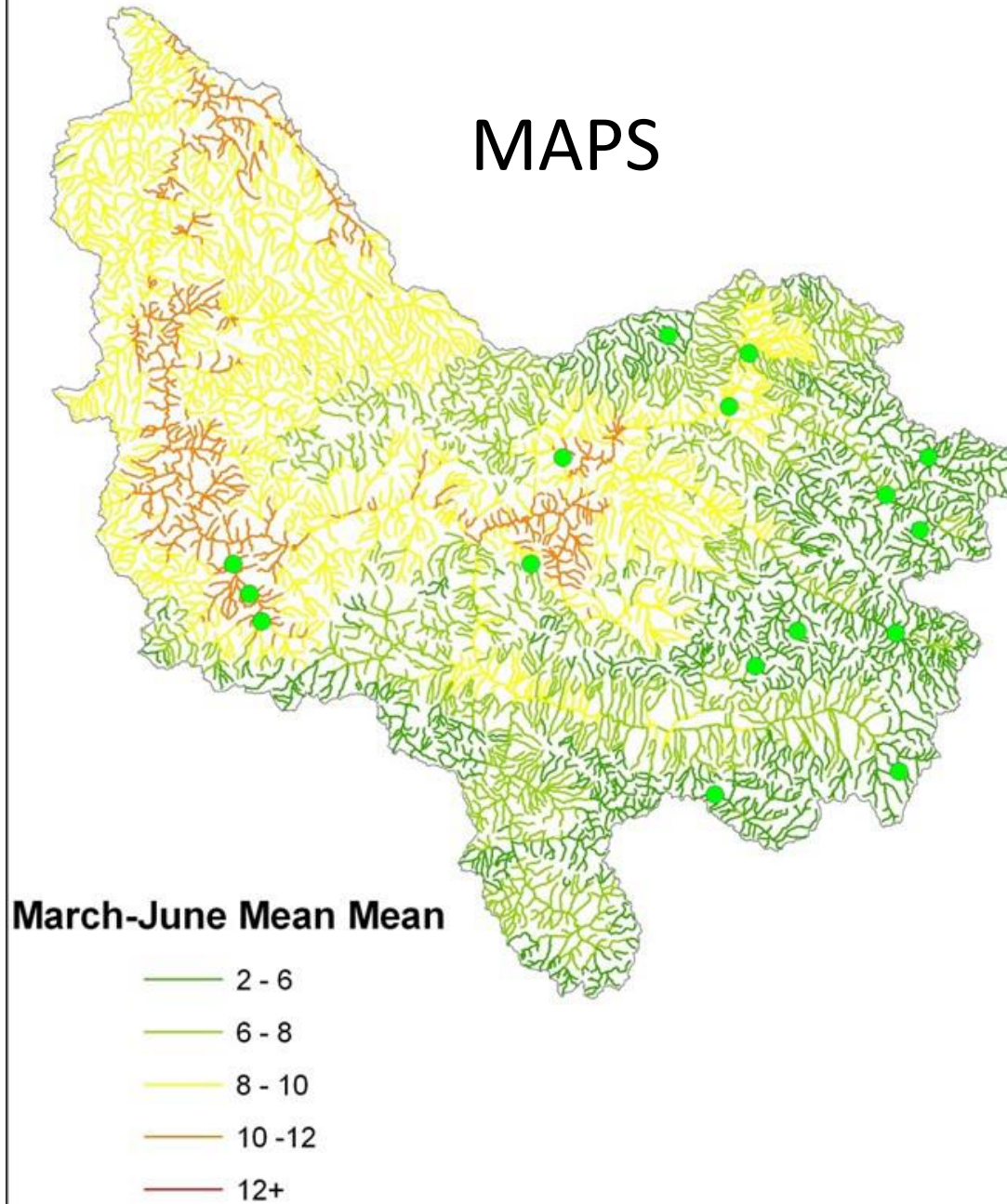
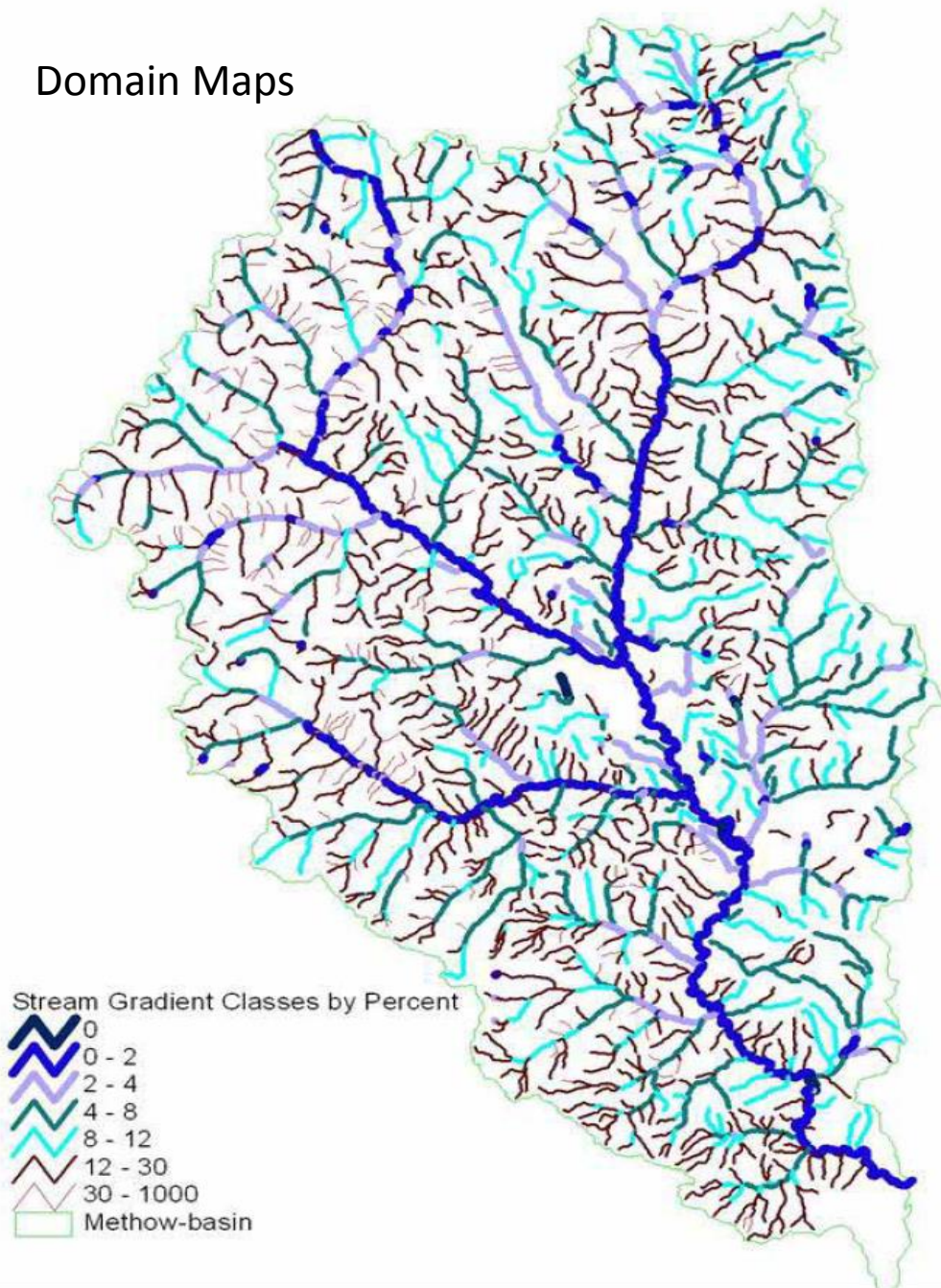
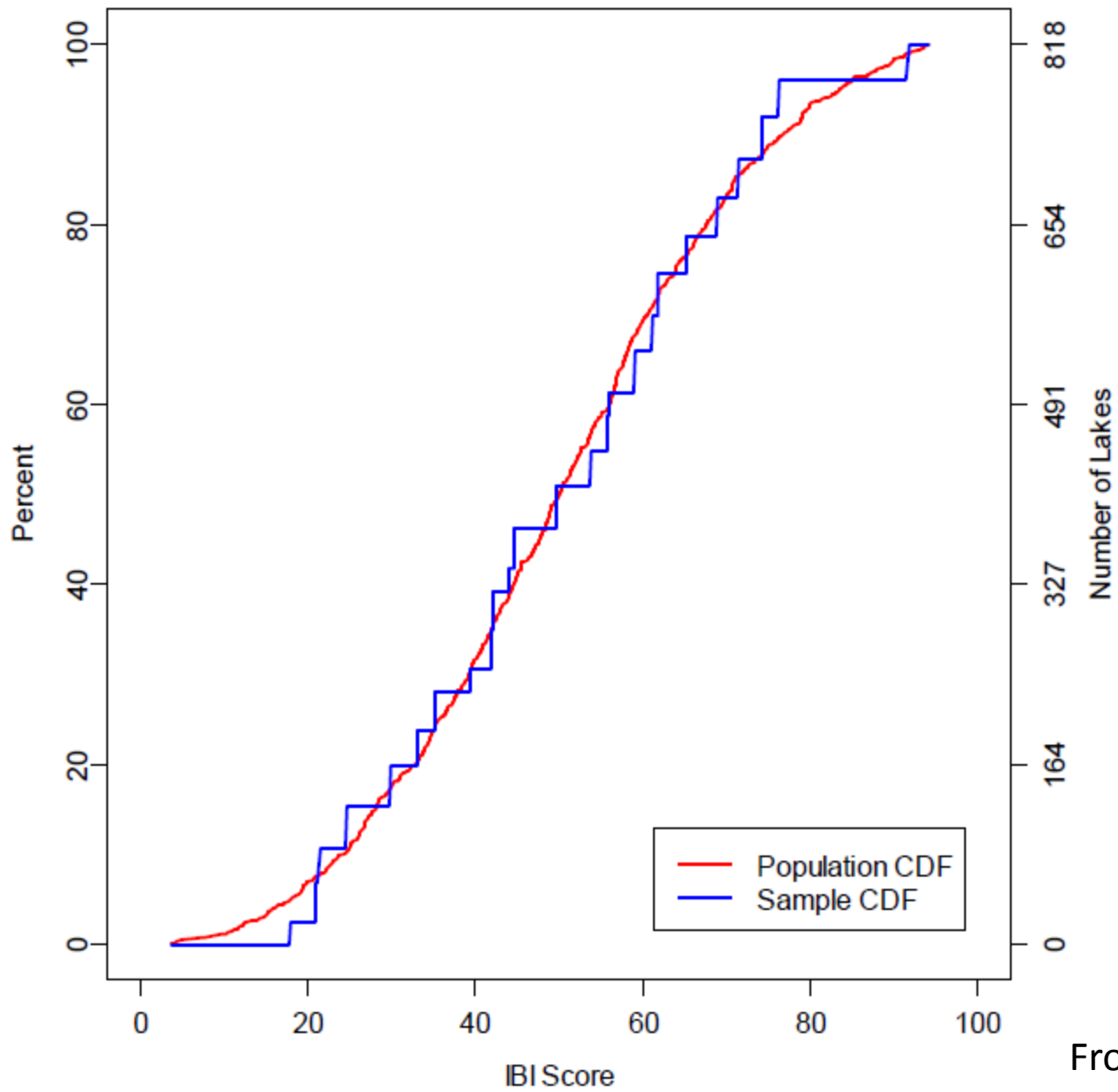


MAPS



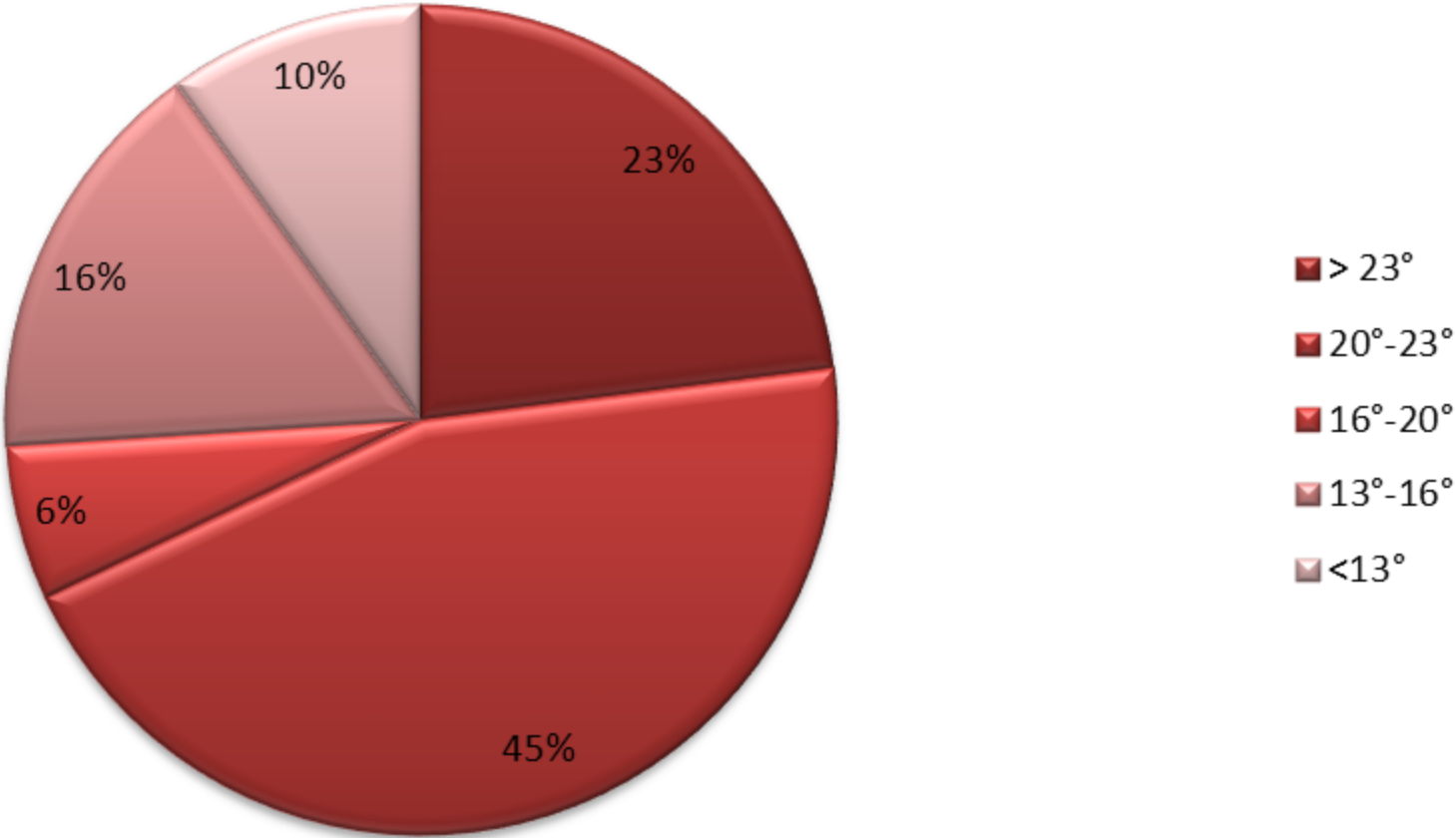
Domain Maps

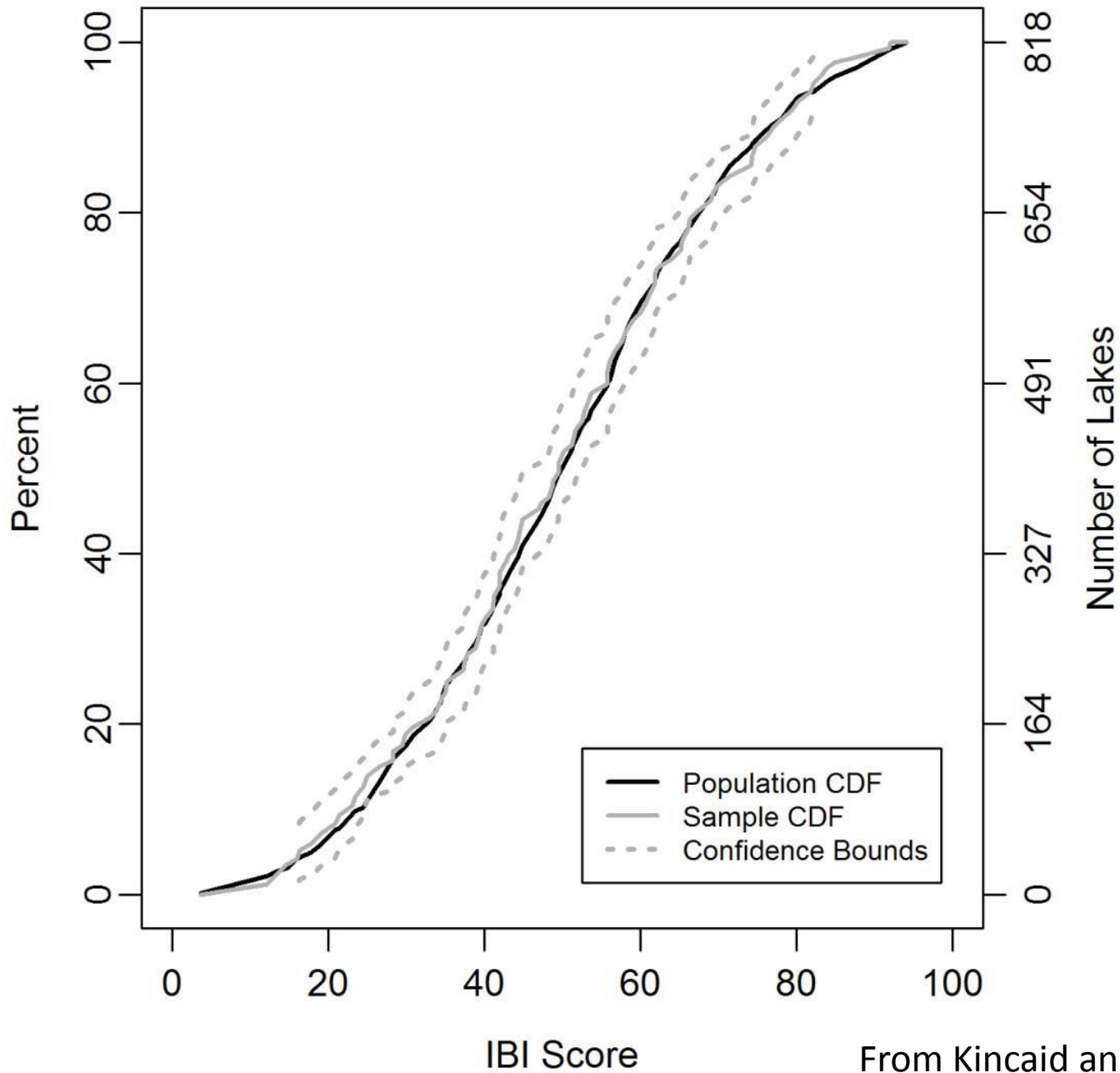




From Olsen et al.,
2012

2011-2012 8-day Max Max temperature, proportion of total stream kilometers, John Day River basin





From Kincaid and Olsen,
2012

Components of Table

- Indicator category
- Indicator:
 - Raw summary: frequency distributions
 - What do you want to report (Graphs; tables)
 - For example: mean, median, variance, criterion violation
- Indicator units
- Spatial inference domain
- Temporal inference domain
- Metrics
 - The site/reach score that is aggregated across sites.
- Metric generation process
 - Calculated from measurements or combination of measurement types
- Measurements
- Etc.

Indicator categories with metrics

- Alkalinity
- Conductivity
- Embeddedness (fast water cobble)
- Pool Frequency
- Reach Channel Complexity
- Total Drift Biomass
- LWD Volume
- Channel Unit Volume
- Riffle Particle Size
- Riparian Structure

Indicator Categories without Metrics

Indicator Category	Metric?	Metric available?
Growth Potential	Macroinvert drift biomass Low flow temperature integration	
Percent Below Summer Temperature Threshold	Number of days summer threshold is violated (specific to ESU and population)	
Percent Above Winter Temperature Threshold	Number of days winter threshold is violated (specific to ESU and population)	
Velocity Heterogeneity	variance of RBT velocity vector magnitude	
Channel Score (AREMP)	RBT topography (?) Wood (category?) Substrate (?) Pool Frequency	
Residual Pool Volume	RBT based estimate	
Subsurface Fines	Under development	
Channel Unit Complexity	Variance channel unit width Variance channel unit depth Variance channel unit thalweg sinuosity	
Solar Input	micro-Einsteins/m ² /yr	